

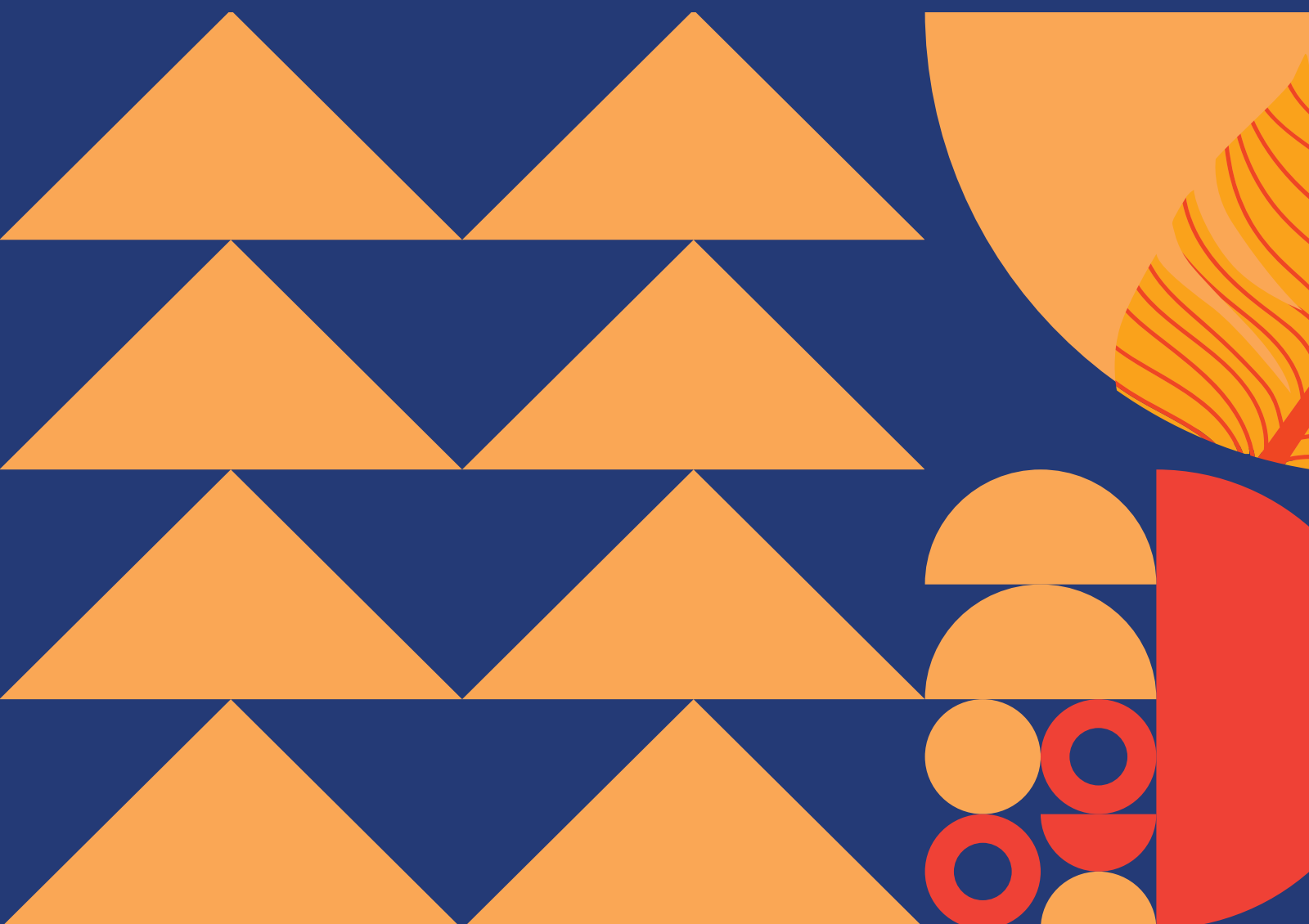


SKYLA

ASHGAR
HEIGHTS



SKY ABOVE,
LIVABILITY WITHIN





About ASHGAR HEIGHTS

An exceptional architectural marvel that merges inventive Mediterranean architecture with contemporary innovations. As you enter the gates of Ashgar Heights, you become a part of a relaxed way of life away from the rush and bustle of city life.

This one-of-a-kind modern residential community, built over 30 acres of beautiful nature and open spaces, provides a choice of villas, townhouses, and apartments giving a genuinely boutique destination for families and people of all ages.

A Strategic LOCATION

Strategically located alongside El Wahat Road adjacent to its Ring Road exit, Ashgar Heights is a unique central point having Mall of Egypt, Zayed Access, Cairo/Alex Road from the west side, Zewail University from the south, and Mohandessine and Downtown towards the north. Ashgar Heights is steps away from Al Ashgar Metro Station.

ZEWAIL
CITY
2 MINS

MALL OF
EGYPT
5 MINS

MALL OF
ARABIA
10 MINS

GIZA
PYRAMIDS
15 MINS





About ASHGAR HEIGHTS APARTMENTS

Ashgar Heights Apartments stand out for their modern architecture, which features luminous colors to represent modern living and effective designs to accommodate family needs. The 502 units in this 30 acres park-themed complex range in size from 50 to 210 square meters.

Ashgar Heights Apartments is now releasing Skyla, its newest flagship cluster, after successfully launching and selling out earlier clusters including Starla and Starla Views.

Ashgar Heights Apartments will allow you to take in a peaceful view of the stunning flora and water features tucked throughout the apartment complexes.

A COMMUNITY FULL OF LIFE

Our community at Ashgar Heights allows you to own a home amid a living residential neighborhood.





A UNIQUE Masterplan



Club House Cafeteria

Jogging Track

Kids Area

Cafeteria Outdoor Area

Gathering Area

Green Berm

Water Feature

BBQ Area

Lawn Area





SKYLA SKY ABOVE, LIVABILITY WITHIN

SKYLA, the latest phase of Ashgar Heights Apartments, provides contemporary and efficient designs to give you the finest in life. There are many unit sizes available, ranging from 70 to 210 square meters.

SKYLA offers an exclusive selection of unit types, including penthouses with roomy roof terraces and ground floor apartments with well-designed gardens that provides you with the utmost privacy and tranquility.

SKY ABOVE, LIVABILITY WITHIN

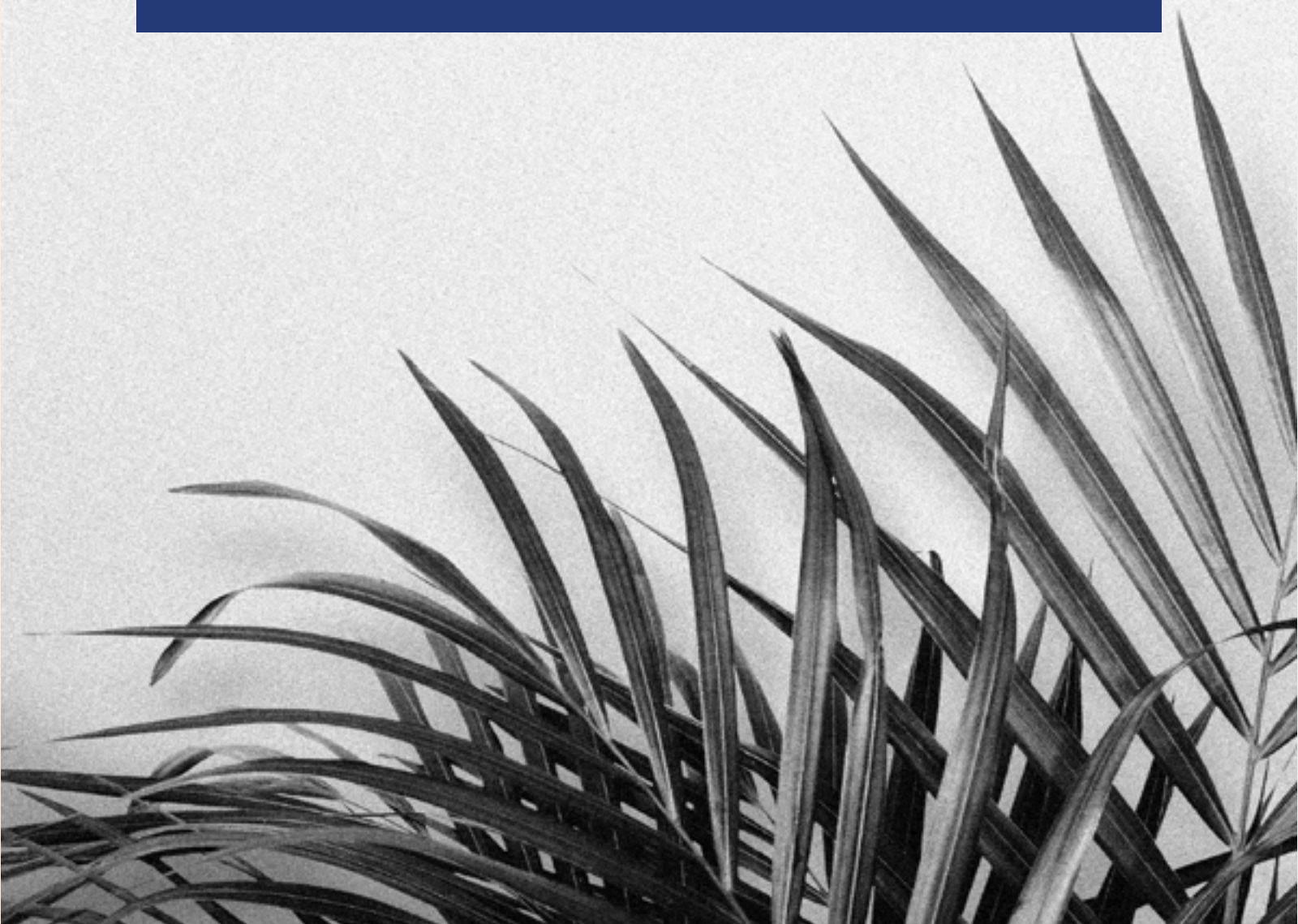
2 to 3 Bedroom Apartments.





IGI
DEVELOPMENTS

Ashgar Heights AMENITIES



Shopping



Offices



Club House



Sports





About IGI DEVELOPMENTS

IGI Developments is the real estate division under the International Group for Investments (IGI) holding, which has been a pioneer in the delivery of premium residential properties in Egypt for the last 28 years. Established in 1942, IGI Developments was the first company to introduce the concept of "residential compounds" to the Egyptian market in 1994. Since then, it has sustained to continue its legacy in the development of the suburbs of Cairo.

IGI Developments has introduced various product offerings ranging between premium upscale residential compounds like Gardenia Park I & II and Gardenia Springs all the way to mixed-use compounds like Al Ashgar, Ashgar Heights and Ashgar City. IGI Developments encompasses a versatile portfolio of primary home developments spanning the West and East side of Cairo.

SINCE **IGI**™ 1942
DEVELOPMENTS

GARDENIA | AL ASHGAR | ASHGAR HEIGHTS | ASHGAR CITY

ANCHOR
DEVELOPMENT & MANAGEMENT